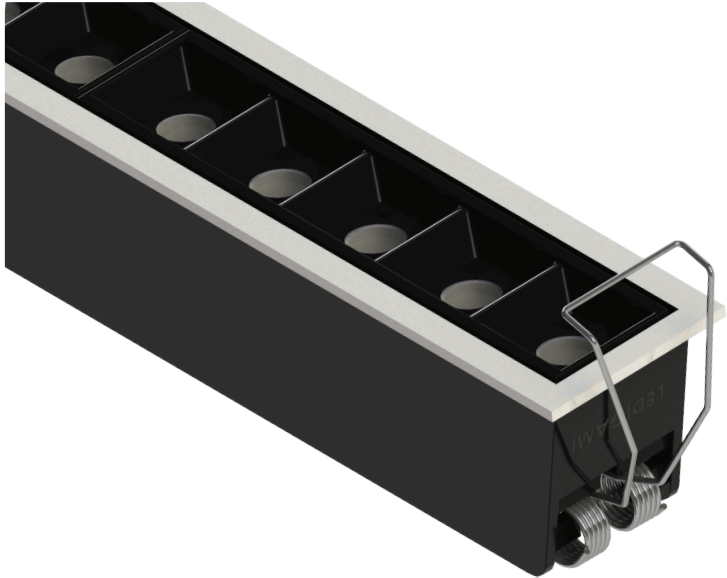


## LED LINEAR DOWNLIGHT GALAXUS

LEDIGAMI LED LINEAR DOWNLIGHT GALAXUS, the slim and modern recessed spotlight that is ideal for the lighting of shop-windows, corridors and entrances. It is a perfect fusion of architectural aesthetics, art-state LED lighting with classic design that allows to achieve a simple and comfortable lighting environment that you would expect from halogen spot light. GALAXUS offers a selection of five models, despite the impossibly small in size; it is incredibly bright, therefore capable of creating the perfect illuminations for application areas.



### SPECIFICATIONS

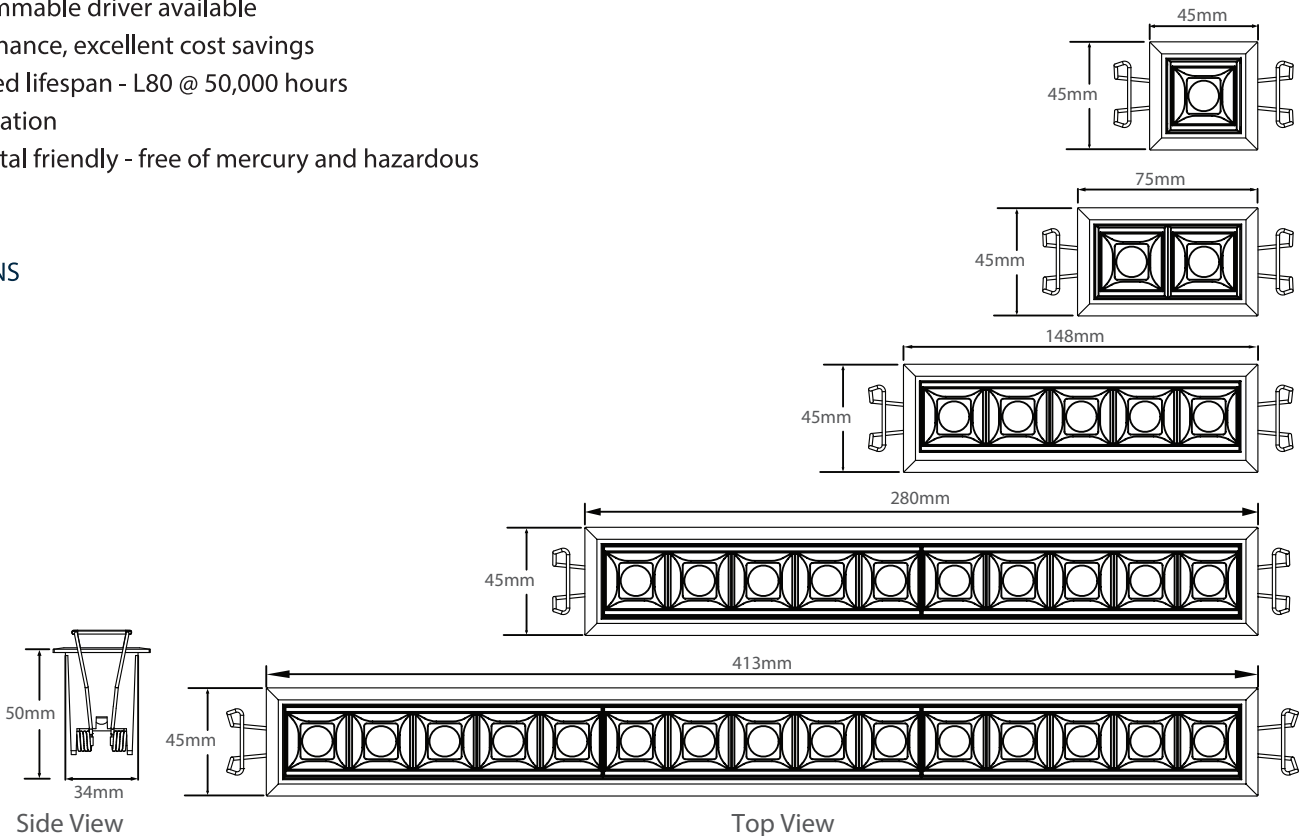
- System Power : 2W, 4W, 10W, 20W & 30W
- Number of LEDs : 1pc, 2pcs, 5pcs, 10pcs & 15pcs
- Beam Angles : 30° & 45°
- CCT : 2700K, 3000K, 4000K & 6000K
- CRI : 80 (\*CRI90)
- IP rating : IP20

### HIGHLIGHTS

- Using CREE LED
- Slim and compact design
- Optional dimmable driver available
- Low maintenance, excellent cost savings
- Average rated lifespan - L80 @ 50,000 hours
- Quick installation
- Environmental friendly - free of mercury and hazardous

### CERTIFICATIONS

- CE
- RoHS



Tolerance: ±2.5mm

\* CRI90 available upon request.

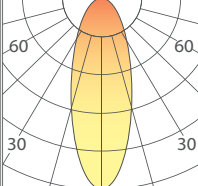
## LED LINEAR DOWNLIGHT GALAXUS Technical Specifications

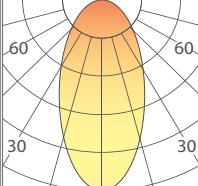
System Power	No. of LEDs	CCT	Beam Angle	Light Output	CRI	Power Factor	IP Rating	Dimension (L x W x H)	Cut Out Size (L x W)	Weight (gm)	Article Number
2W	1pc	2700K	30°	180lm	80	>0.90	20	45 x 45 x 50mm	37 x 37mm	45gm	T8-GLX-MJ-51212C
2W	1pc	3000K	30°	180lm	80	>0.90	20	45 x 45 x 50mm	37 x 37mm	45gm	T8-GLX-MJ-51232C
2W	1pc	4000K	30°	200lm	80	>0.90	20	45 x 45 x 50mm	37 x 37mm	45gm	T8-GLX-MJ-51252C
2W	1pc	6000K	30°	200lm	80	>0.90	20	45 x 45 x 50mm	37 x 37mm	45gm	T8-GLX-MJ-51292C
2W	1pc	2700K	45°	180lm	80	>0.90	20	45 x 45 x 50mm	37 x 37mm	45gm	T8-GLX-MJ-51312C
2W	1pc	3000K	45°	180lm	80	>0.90	20	45 x 45 x 50mm	37 x 37mm	45gm	T8-GLX-MJ-51332C
2W	1pc	4000K	45°	200lm	80	>0.90	20	45 x 45 x 50mm	37 x 37mm	45gm	T8-GLX-MJ-51352C
2W	1pc	6000K	45°	200lm	80	>0.90	20	45 x 45 x 50mm	37 x 37mm	45gm	T8-GLX-MJ-51392C
4W	2pcs	2700K	30°	360lm	80	>0.90	20	75 x 45 x 50mm	68 x 37mm	90gm	T8-GLX-NJ-52212C
4W	2pcs	3000K	30°	360lm	80	>0.90	20	75 x 45 x 50mm	68 x 37mm	90gm	T8-GLX-NJ-52232C
4W	2pcs	4000K	30°	400lm	80	>0.90	20	75 x 45 x 50mm	68 x 37mm	90gm	T8-GLX-NJ-52252C
4W	2pcs	6000K	30°	400lm	80	>0.90	20	75 x 45 x 50mm	68 x 37mm	90gm	T8-GLX-NJ-52292C
4W	2pcs	2700K	45°	360lm	80	>0.90	20	75 x 45 x 50mm	68 x 37mm	90gm	T8-GLX-NJ-52312C
4W	2pcs	3000K	45°	360lm	80	>0.90	20	75 x 45 x 50mm	68 x 37mm	90gm	T8-GLX-NJ-52332C
4W	2pcs	4000K	45°	400lm	80	>0.90	20	75 x 45 x 50mm	68 x 37mm	90gm	T8-GLX-NJ-52352C
4W	2pcs	6000K	45°	400lm	80	>0.90	20	75 x 45 x 50mm	68 x 37mm	90gm	T8-GLX-NJ-52392C
10W	5pcs	2700K	30°	900lm	80	>0.90	20	148 x 45 x 50mm	140 x 37mm	220gm	T8-GLX-CJ-53212C
10W	5pcs	3000K	30°	900lm	80	>0.90	20	148 x 45 x 50mm	140 x 37mm	220gm	T8-GLX-CJ-53232C
10W	5pcs	4000K	30°	1000lm	80	>0.90	20	148 x 45 x 50mm	140 x 37mm	220gm	T8-GLX-CJ-53252C
10W	5pcs	6000K	30°	1000lm	80	>0.90	20	148 x 45 x 50mm	140 x 37mm	220gm	T8-GLX-CJ-53292C
10W	5pcs	2700K	45°	900lm	80	>0.90	20	148 x 45 x 50mm	140 x 37mm	220gm	T8-GLX-CJ-53312C
10W	5pcs	3000K	45°	900lm	80	>0.90	20	148 x 45 x 50mm	140 x 37mm	220gm	T8-GLX-CJ-53332C
10W	5pcs	4000K	45°	1000lm	80	>0.90	20	148 x 45 x 50mm	140 x 37mm	220gm	T8-GLX-CJ-53352C
10W	5pcs	6000K	45°	1000lm	80	>0.90	20	148 x 45 x 50mm	140 x 37mm	220gm	T8-GLX-CJ-53392C
20W	10pcs	2700K	30°	1800lm	80	>0.90	20	280 x 45 x 50mm	273 x 37mm	440gm	T8-GLX-AJ-54212C
20W	10pcs	3000K	30°	1800lm	80	>0.90	20	280 x 45 x 50mm	273 x 37mm	440gm	T8-GLX-AJ-54232C
20W	10pcs	4000K	30°	2000lm	80	>0.90	20	280 x 45 x 50mm	273 x 37mm	440gm	T8-GLX-AJ-54252C
20W	10pcs	6000K	30°	2000lm	80	>0.90	20	280 x 45 x 50mm	273 x 37mm	440gm	T8-GLX-AJ-54292C
20W	10pcs	2700K	45°	1800lm	80	>0.90	20	280 x 45 x 50mm	273 x 37mm	440gm	T8-GLX-AJ-54312C
20W	10pcs	3000K	45°	1800lm	80	>0.90	20	280 x 45 x 50mm	273 x 37mm	440gm	T8-GLX-AJ-54332C
20W	10pcs	4000K	45°	2000lm	80	>0.90	20	280 x 45 x 50mm	273 x 37mm	440gm	T8-GLX-AJ-54352C
20W	10pcs	6000K	45°	2000lm	80	>0.90	20	280 x 45 x 50mm	273 x 37mm	440gm	T8-GLX-AJ-54392C
30W	15pcs	2700K	30°	2700lm	80	>0.90	20	413 x 45 x 50mm	405 x 37mm	660gm	T8-GLX-OJ-55212C
30W	15pcs	3000K	30°	2700lm	80	>0.90	20	413 x 45 x 50mm	405 x 37mm	660gm	T8-GLX-OJ-55232C
30W	15pcs	4000K	30°	3000lm	80	>0.90	20	413 x 45 x 50mm	405 x 37mm	660gm	T8-GLX-OJ-55252C
30W	15pcs	6000K	30°	3000lm	80	>0.90	20	413 x 45 x 50mm	405 x 37mm	660gm	T8-GLX-OJ-55292C
30W	15pcs	2700K	45°	2700lm	80	>0.90	20	413 x 45 x 50mm	405 x 37mm	660gm	T8-GLX-OJ-55312C
30W	15pcs	3000K	45°	2700lm	80	>0.90	20	413 x 45 x 50mm	405 x 37mm	660gm	T8-GLX-OJ-55332C
30W	15pcs	4000K	45°	3000lm	80	>0.90	20	413 x 45 x 50mm	405 x 37mm	660gm	T8-GLX-OJ-55352C
30W	15pcs	6000K	45°	3000lm	80	>0.90	20	413 x 45 x 50mm	405 x 37mm	660gm	T8-GLX-OJ-55392C

Note:

1. LED is a dynamic and constantly evolving technology. The final lux output of LED Linear Downlight Galaxus may vary
2. LED Linear Downlight Galaxus needs to connect with an external driver
3. The total system power consumption is with 10% tolerance under 100-240V input voltage
4. Operating temperature = Ta-30°C - +45°C

## LED LINEAR DOWNLIGHT GALAXUS Radiation Pattern & Lux Diagram

Beam Angle : 30°		Typical Center Beam Lux (lx)				
	Dist. (m)	2W	4W	10W	20W	30W
	1	607	1215	3038	6077	9066
	2	152	303	759	1519	2266
	3	67	135	337	675	1007

Beam Angle : 45°		Typical Center Beam Lux (lx)				
	Dist. (m)	2W	4W	10W	20W	30W
	1	319	639	1597	3194	4759
	2	79	159	399	798	1189
	3	35	71	177	355	528

- Note:
1. LED is a dynamic and constantly evolving technology. The final lux output of LED Linear Downlight Galaxus may vary
  2. LED Linear Downlight Galaxus needs to connect with an external driver
  3. The total system power consumption is with 10% tolerance under 100-240V input voltage
  4. Operating temperature = Ta-30°C - +45°C